



# Resources Technology and Critical Minerals Trailblazer

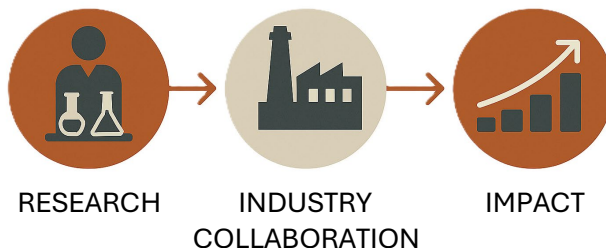
Transforming how industry, universities and research work together


Supporting optimization of resource operations by developing new technologies

Equipping innovators with the skills and knowledge to transform the sector

## Project

**Optimising the Geophysical Ore Body Model to aid Discovery of New Critical Mineral Deposits**



 Curtin University

IN COLLABORATION WITH

# Optimising the Geophysical Ore Body Model to aid Discovery of New Critical Mineral Deposits

## Project Description

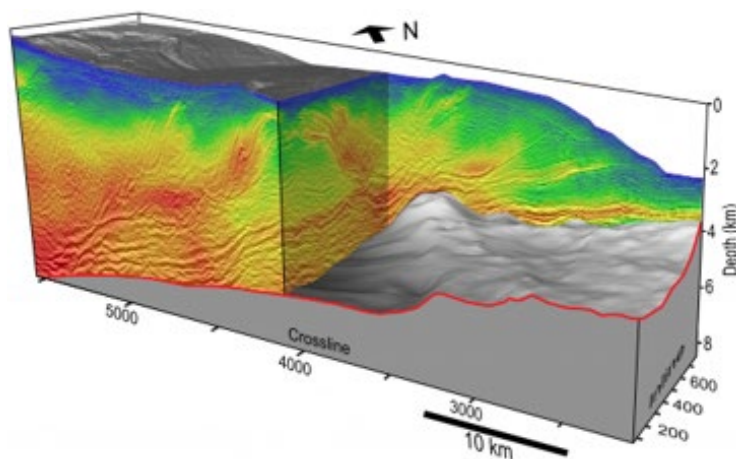
### Problem

Current geophysical techniques do not reliably distinguish between barren and mineralised areas.

### Aims

Characterise the geophysical responses of IOCG, base metal and porphyry mineralisation.

Integrate 3D geology, petrophysics and AI modelling to classify geophysical anomalies and detect mineralisation signatures.



## Partnerships

### Collaborators

James Cook University – Physical Sciences, Geoscience  
Industry – Anglo American, Strategic Energy Resources  
Government – CSIRO

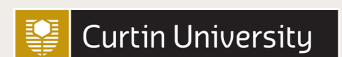
### Project Lead

Dr Lauren Waszek, JCU

### Contributions

Industry ~ \$4.75m  
Trailblazer ~ \$0.55m  
Total Project Value ~ \$5.3m

April 2026  
For further information on JCU Trailblazer projects please send enquiries to: [EGRU@jcu.edu.au](mailto:EGRU@jcu.edu.au)



IN COLLABORATION WITH

